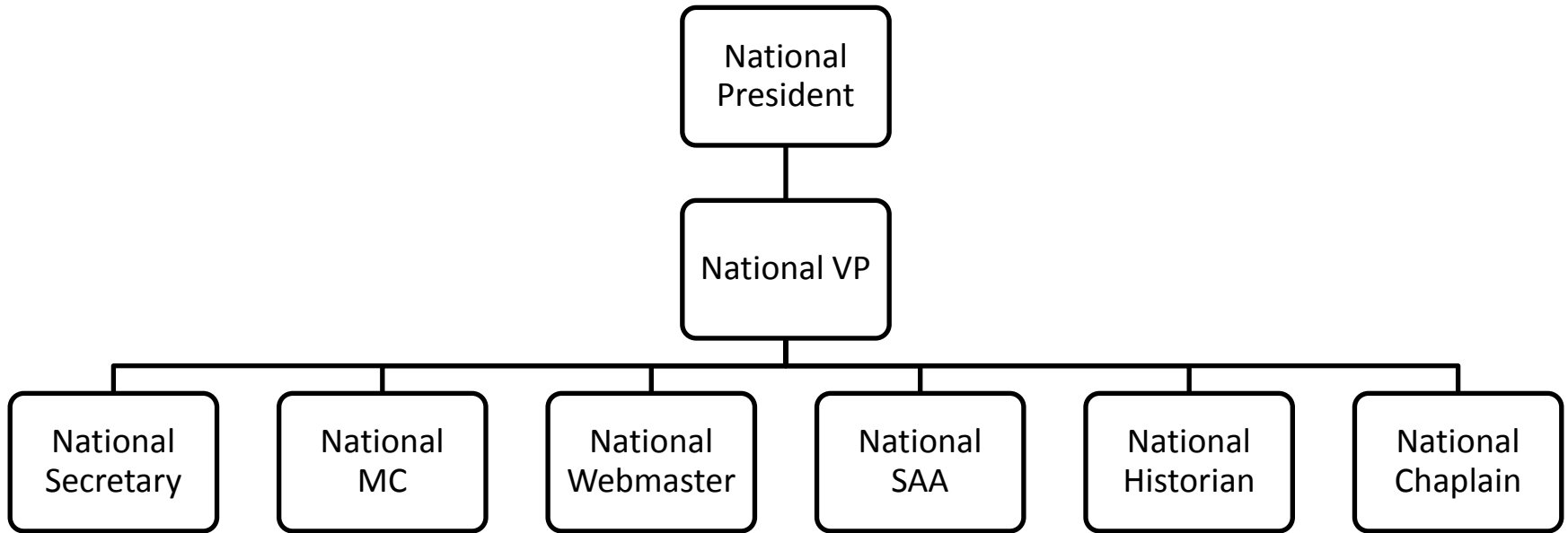




Kappa Epsilon Psi Military Sorority, Inc.

National Executive Officers



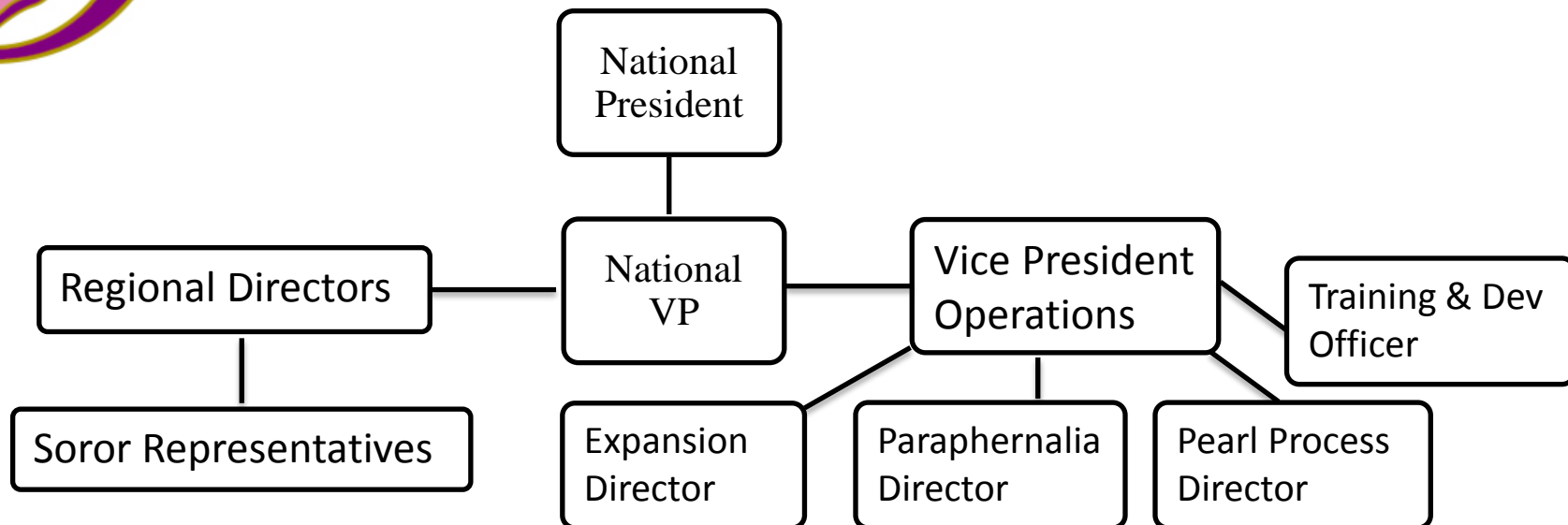
- All elected positions report to the Vice President

"We aspire to Honor our Past female service members, Unite our Present female service members, and Mentor our future leadership of the Armed Forces."



Kappa Epsilon Psi Military Sorority, Inc.

Appointed Positions Communication Flow



- Regional Directors report directly to the National Vice-President and National President
- Soror Representatives report directly to their assigned Regional Directors.
- Vice President of Operations report directly to the National Vice-President.
- Expansion Director, Paraphernalia Director & Pearl Process Director report directly to the VP of Operations.
- Training & Development Officer reports directly to the VP of Operations.

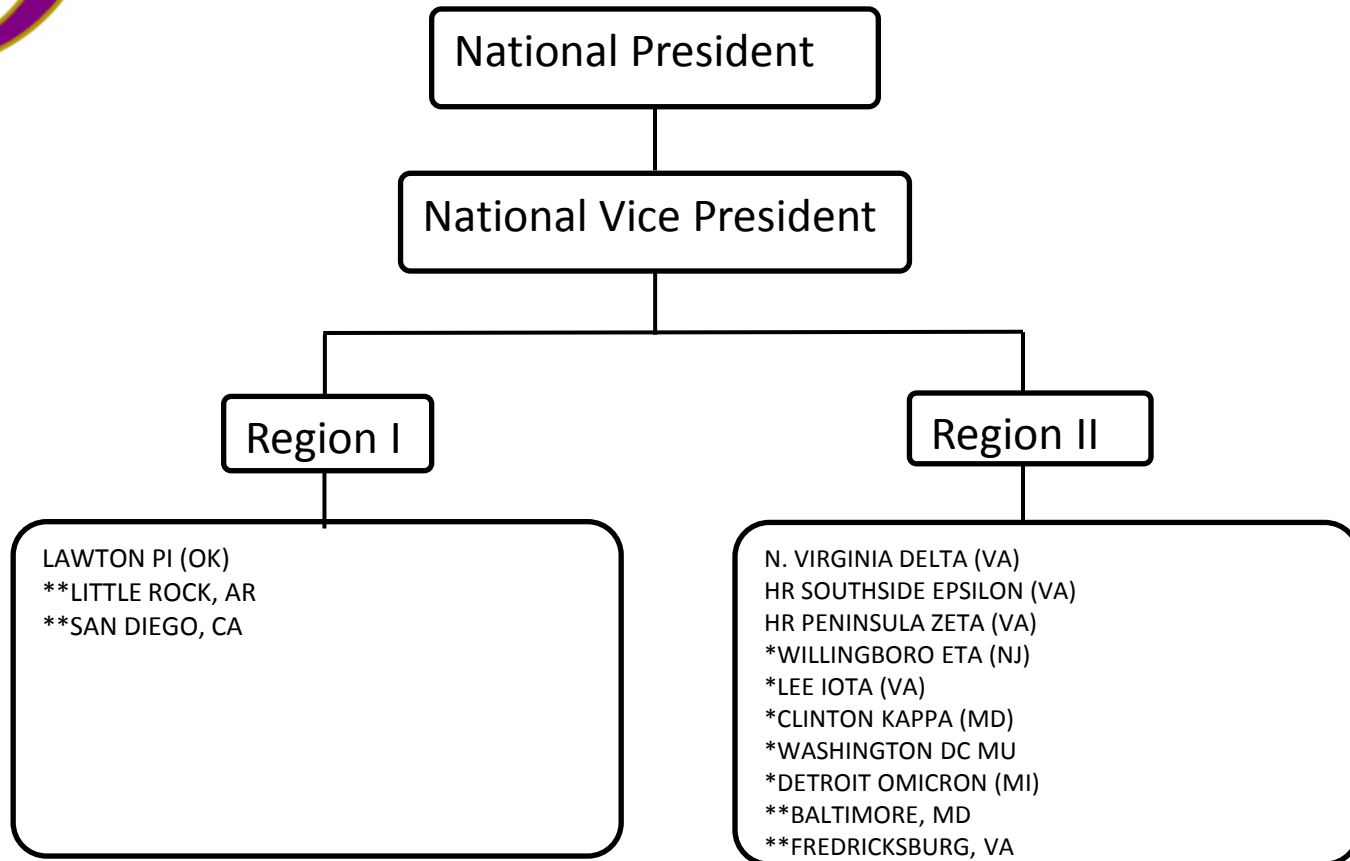
NOTE: The VP of Operations position will be filled- TBD. Until then Expansion, Paraphernalia & PP Directors will report directly to the National VP.

"We aspire to Honor our Past female service members, Unite our Present female service members, and Mentor our future leadership of the Armed Forces."



Kappa Epsilon Psi Military Sorority, Inc.

Regional Communication Flow



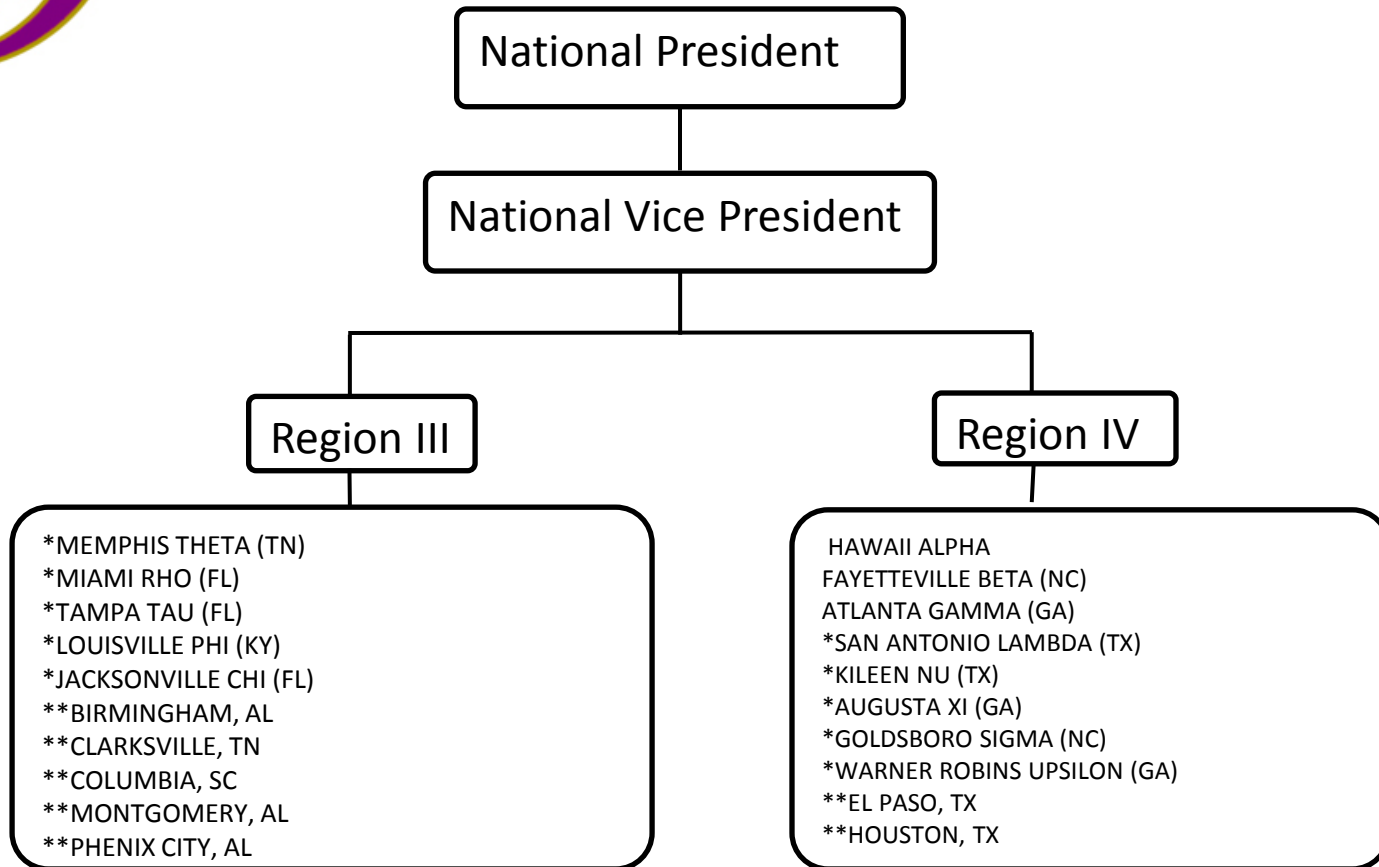
- All Chapter Presidents & Clusters report to their respective Regional Directors
- Note: *means provisional chapters & **means clusters

"We aspire to Honor our Past female service members, Unite our Present female service members, and Mentor our future leadership of the Armed Forces."



Kappa Epsilon Psi Military Sorority, Inc.

Regional Communication Flow



- All Chapter Presidents report to their respective Regional Directors
- Note: *means provisional chapters & **means clusters

"We aspire to Honor our Past female service members, Unite our Present female service members, and Mentor our future leadership of the Armed Forces."